

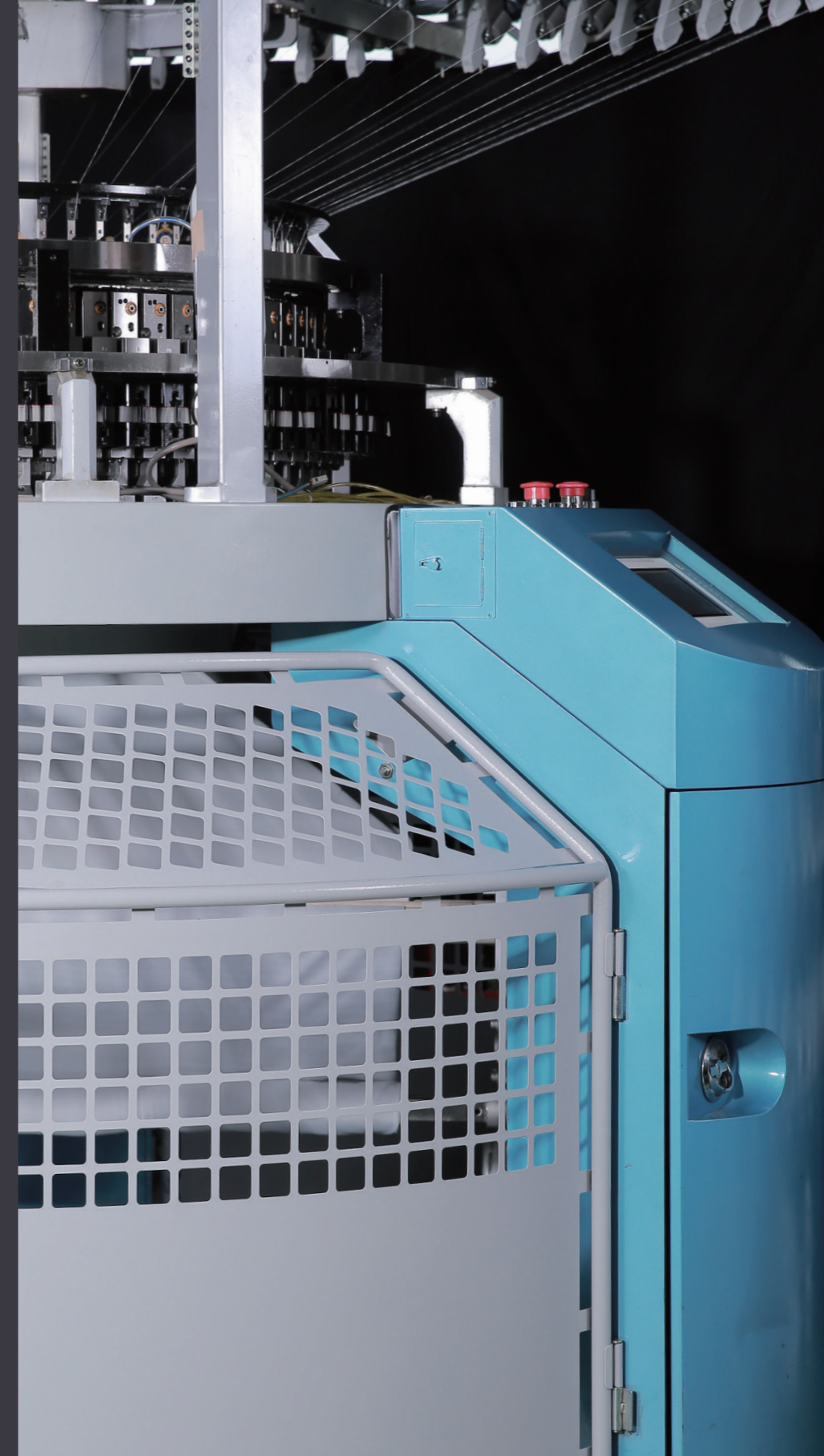


Single Jersey Fleece  
Jacquard Circular Knitting Machine

PAI LUNG MACHINERY MILL CO.,LTD.  
No.8 Ding Ping Rd., Ruei-Fang Industrial Park, Ruei-Fang Dist., New Taipei City, Taiwan.  
台灣新北市瑞芳區瑞芳工業區頂坪路8號  
TEL:886-2-24978888 FAX:886-2-24965666  
www.pailung.com.tw

THE FABRIC  
OF INNOVATION

PAI LUNG



**K**nitel Series

Single Knit

Single Jersey Fleece  
Jacquard Circular Knitting Machine

單面三線襪緯大提花圓筒針織機

PL-KFCJ





## Products Introduction

Since its introduction in the 90's, the Pai Lung's full jacquard machine has established a reputation for the highest performance standards; the presentation of the new generation Knitel series PL-KFCJ increases Pai Lung's leading position in this quintessential full jacquard system area.

Equipped with the new generation Piezo element control system, PL-KFCJ is able to reach three technical ways to fulfill the jacquard request which ability overcomes the limit range in the general mechanical jacquard machine. Upon first glance, its efficiency makes reliable output. On closer inspection, its jacquard technological feats present full requested pattern design.

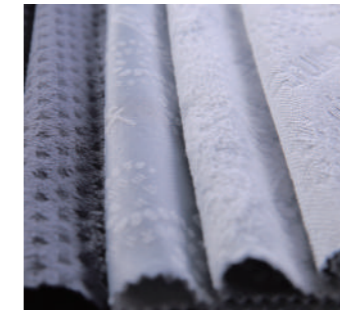
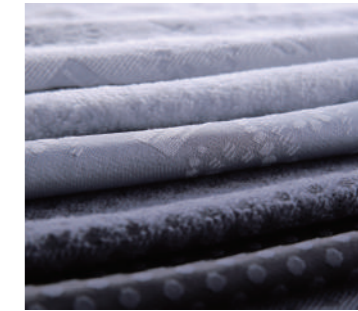
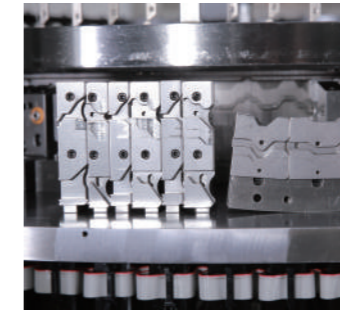
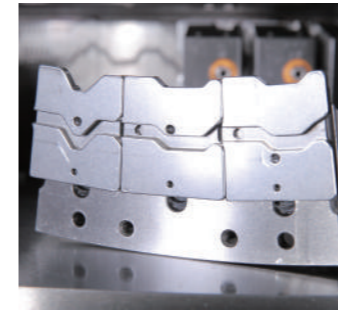
Pai Lung offers its design software Pandora operation in Microsoft Windows. With multi-function in the entire display, it is easy to create complex pattern on the system, and converts the pattern design to the jacquard machine and pattern knits.

Applied with different yarn types and 1~3 color design, Pai Lung's PL-KFCJ has the advantaged abilities in the situation of less preparation, and quick pattern change for matching various demands from market. Cooperate with the selecting unit, no matter fleece yarn, tie-in yarn and ground yarn are both workable for jacquard structure.

To provide its users unlimited fleece possibilities It is also convertible from PL-KFCJ to PL-KSCJ by changing the needles, sinkers, dial cam caps cylinder cams & yarn carriers.

### SPECIFICATIONS OF MACHINE MODELS

Yarn material: pure cotton, blend, and synthetic fibers etc.



## 產品介紹

### PL-KFCJ

擁有世界頂尖研發團隊，佰龍機械身為全方位針織機械解決方案的領導者之一，秉持一貫的高品質科技創新，提供完整的產品組合，讓針織業界各領域的使用者皆能創造最豐富的績效。

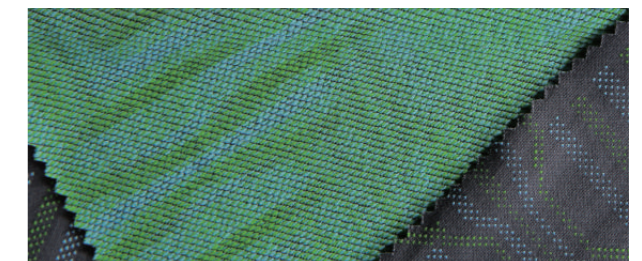
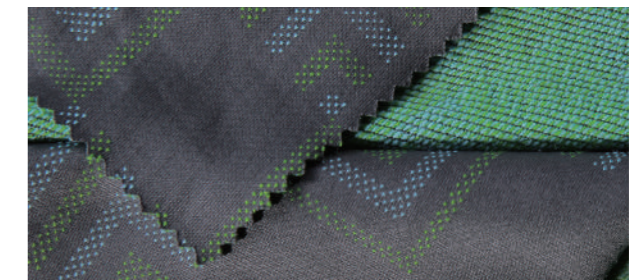
為求極度競爭的產業中保持領先，佰龍在單面電子控制大提花圓筒機功能和技術服務上保持同步領先。本系列依據市場需求及紗線變化運用，而發展出規格不同機種：

採用可靠及維修簡易的電子壓變陶瓷選針器系統作為本機選針織造提花面料的基礎架構。提花機件包括針筒織針、中段針及提花針，配合三工位選針系統，能編織指定圖案之大型提花織品，該功能克服了一般機械提花有限度花形範圍之缺點，並且有效節省花形更換所花的時間。機台上裝置1MB記憶體，並可依需求擴增容量系統並具備精密編碼器可以準確計算織針位置和校正零點。

佰龍另提供選購之專用軟件Pandora，可在Windows系統下繪製或掃描輸入圖案，轉換至針織機可讀取之程序並執行織造。Pandora繪圖系統具備多種功能，可快速製作及複製複雜圖形，並表現左右對稱，上下翻轉等效果。搭配不同色紗及種類，PL-KFCJ功用變化上更為

豐富，在一般大提花布表現圖案設計，強調了產品與眾不同的價值感，搭配圓筒針織機原有的便利性，可以提供少量多樣的生產利基。魚鱗提花山角的设计，配合選針器，毛紗、綁紗、底紗皆可提花，可供製作不同花形之魚鱗布面。也可由一般大提花機更換織針、新克片、切盤組、下山角、喂紗嘴組，即可轉換為魚鱗提花。

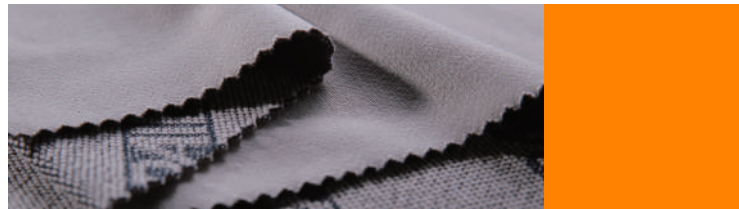
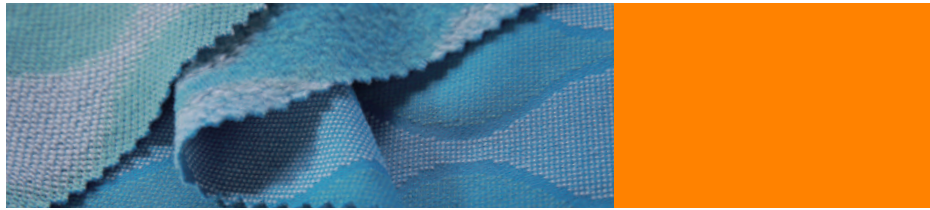
可運用原料包括純棉，混紡，化纖等。





# Applications

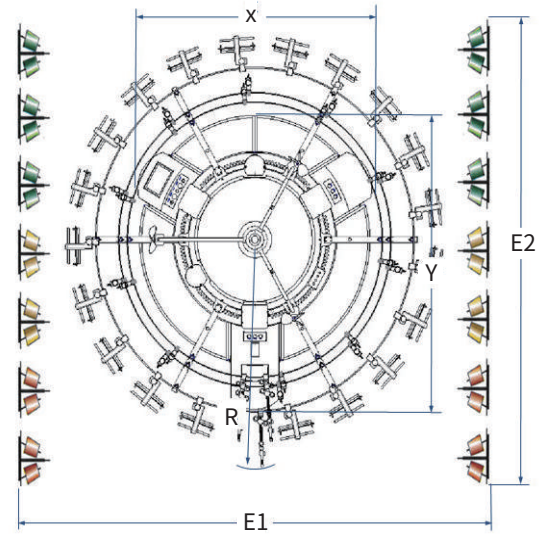
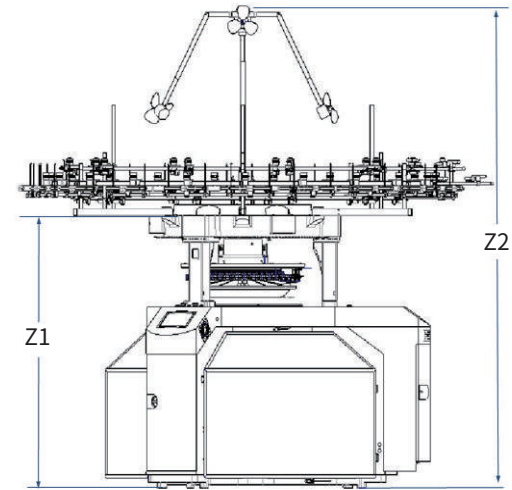
**K** Pai Lung K-series  
Single Knit



**Feeder No. & Needle Chart** 口數 & 針筒總針數表

Dia	路數	20G	22G	24G	26G	28G	HP
24"	60F	1500	1656	1800	1956	2100	5
26"	60F	1632	1800	1844	2212	2280	5
28"	60F	1752	1932	2100	2280	2460	7.5
30"	72F	1872	2064	2256	2448	2640	7.5
32"	72F	2016	2232	2400	2616	2808	7.5
34"	72F	2136	2352	2568	2784	3000	7.5
36"	72F	2256	2484	2712	2928	3156	7.5
38"	84F	2376	2616	2856	3096	3334	7.5
40"	84F	2508	2760	3012	3264	3516	7.5

**Dimensions** 機台外觀尺寸圖



TF	X	Y	R	Z1	Z2	E1	E2
31"~34"	2035	2370	1682	2005	3457.3	3564	3345
35"~40"	2177	2531	1762	2005	3457.3	3724	4060

**Production** 產量






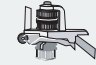






機種	Dia. 直徑	Gauge. 針距	R.P.M. 轉速	Yarn 紗種	Weight 重量 (g/m <sup>2</sup> )	Width 幅寬
KFCJ	34	28	14.1	POLYESTER 150D/144F SD DTY	185	73
KFCJ	34	28	12.6	POLYESTER 150D/144F SD DTY NYLON 140D/96F SD DTY	201	78

- Above specification may be changed without notice.
- Investigating management software does not include factory layout.
- 以上規格配備若有變更，無法先行通知，仍以實體為準。
- 客戶需自行購買配合整廠管理所需之配線。

# Dimensional drawings

# Basic Configuration

	標準配備	選項配備
 控制介面	<ul style="list-style-type: none"> <li>- 數據顯示控制面板</li> <li>• 三班制工作計數, 機台轉速, 布量預控設定</li> <li>• 異常停機原因顯示</li> <li>• 一般操作及緊急停止按鈕</li> </ul>	<ul style="list-style-type: none"> <li>- 整合式觸控功能液晶螢幕</li> <li>• 完整提供所有操作狀況及數據顯示</li> <li>• RS-485 介面可結合監控系統POMS</li> <li>• Decotex 連接埠</li> </ul>
 電源	<ul style="list-style-type: none"> <li>- 380V, 50/60 Hz</li> <li>- 3.7Kw/5Hp</li> <li>- 5.5Kw/7.5Hp - 7.3Kw/10Hp</li> <li>- 變頻傳動控制裝置</li> </ul>	<ul style="list-style-type: none"> <li>- 220V, 50/60Hz</li> <li>- 415~460V, 50/60Hz</li> </ul>
 捲布裝置	<ul style="list-style-type: none"> <li>- 馬達式捲布機</li> <li>- 標準捲布直徑 17"</li> <li>- 均衡張力方形撐布架裝置</li> </ul>	<ul style="list-style-type: none"> <li>- 佰龍機械式變速捲布機</li> <li>- 摺布/捲布兩用捲取機</li> <li>- 開幅剖布/捲布裝置</li> <li>- 泳立機械式變速捲布機</li> </ul>
 織針及沉降片	<ul style="list-style-type: none"> <li>- 沉降片</li> <li>- 針筒織針、中間針、提花針</li> </ul>	
 三角配置	<ul style="list-style-type: none"> <li>- 沉降片三角</li> <li>- 下針筒為提花系統三角配備</li> </ul>	
 儲紗裝置	<ul style="list-style-type: none"> <li>- PL-KFCJ 為美名格 MPF-20L1F</li> </ul>	<ul style="list-style-type: none"> <li>- PL-KFCJ 可改用電子儲存式送紗器 SFE</li> <li>- 氨輪輸紗器 MER3</li> <li>- 依客戶需求提供其他形式儲紗裝置</li> </ul>
 機架	<ul style="list-style-type: none"> <li>- 佰龍 K 系列機盤</li> <li>- 浸油潤滑四鋼線軸承</li> <li>- 逆時鐘轉向運轉下布</li> </ul>	
 喂紗嘴	<ul style="list-style-type: none"> <li>- 單孔加瓷環</li> </ul>	<ul style="list-style-type: none"> <li>- 氨綸添紗裝置</li> </ul>
 噴油機	<ul style="list-style-type: none"> <li>- Uniwave 噴霧式噴油機</li> </ul>	<ul style="list-style-type: none"> <li>- Pulsonic 5.2 脈衝式壓力噴油機</li> <li>- 佰龍噴霧式噴油機</li> </ul>
 紗架	<ul style="list-style-type: none"> <li>- PL-KFCJ 採用 B8/B9 組合式落地紗架</li> <li>- PL-KFCJ-/CS3 採用四面開放式彩條紗架</li> </ul>	<ul style="list-style-type: none"> <li>- D8/D9 組合式 PVC 風管或鋁管落地紗架</li> <li>- 風扇除絮型風扇紗架</li> <li>- 密閉式過濾紗架系統</li> </ul>
 其他	<ul style="list-style-type: none"> <li>- 壞針或布面破洞自停裝置</li> <li>- 機架及布面照明裝置</li> <li>- 上段風扇吹絮裝置</li> <li>- 壓縮空氣最低需求: 6 bar, 250 l/min</li> </ul>	<ul style="list-style-type: none"> <li>- UNIWAVE 中段噴風除塵設備</li> <li>- 美名格上段除塵</li> <li>- 整合式液晶螢幕觸控螢幕可連結以下裝置:</li> <li>• POMS 佰龍線上監控系統</li> </ul>
 轉換件		<ul style="list-style-type: none"> <li>- PL-KFCJ 可以變更為 PL-KSCJ 單面電子大提花圓筒針織機, PL-KSE(P)CJ 單面網眼電子大提花圓筒針織機。</li> </ul>

	Standard	Options
 Control	<ul style="list-style-type: none"> <li>- Digital control panel</li> <li>• 3 shift counter, rpm, fabric roll per-set, &amp; working hr.</li> <li>• Stop reason indication.</li> <li>• Emergency &amp; control buttons</li> </ul>	<ul style="list-style-type: none"> <li>- Integrated LCD touch control panel</li> <li>• Full info &amp; control present</li> <li>• Ready for POMS</li> <li>• Ready for Decotex</li> </ul>
 Power	<ul style="list-style-type: none"> <li>- 380V, 50/60Hz,</li> <li>- 3.7Kw/5Hp</li> <li>- 5.5Kw/7.5Hp - 7.3Kw/10Hp</li> <li>- Inverter power control</li> </ul>	<ul style="list-style-type: none"> <li>- 220V, 50/60Hz</li> <li>- 415~460V, 50/60Hz</li> </ul>
 Take - up	<ul style="list-style-type: none"> <li>- Motor take up system</li> <li>- Cadratex fabric spreader</li> <li>- Standard fabric roll dia' 17"</li> </ul>	<ul style="list-style-type: none"> <li>- Pai Lung mechanical take up system</li> <li>- Folding/rolling take up system</li> <li>- Open width take up system</li> <li>- Yung Leader mechanical take up system</li> </ul>
 Needle	<ul style="list-style-type: none"> <li>- Full sets of sinkers</li> <li>- Full set of cylinder needles, middle jack, pattern jack</li> </ul>	
 Camming	<ul style="list-style-type: none"> <li>- Sinker cams</li> <li>- Jacquard selecting cam system in cylinder</li> </ul>	
 Yarn storage	<ul style="list-style-type: none"> <li>- MPF-20L1F type for PL-KFCJ</li> </ul>	<ul style="list-style-type: none"> <li>- Electronic storage feeder SFE applied in SFE</li> <li>- Elastane roller MER3</li> <li>- Other brand feeders on request</li> </ul>
 Frame	<ul style="list-style-type: none"> <li>- Pai Lung K frame</li> <li>- Oil-bathed wire bearing system</li> <li>- Counter-clockwise direction</li> </ul>	
 Yarn carries	<ul style="list-style-type: none"> <li>- Single hole type with ceramics</li> </ul>	<ul style="list-style-type: none"> <li>- Spandex attachment</li> </ul>
 Oiler	<ul style="list-style-type: none"> <li>- Uniwave misty oiler</li> </ul>	<ul style="list-style-type: none"> <li>- Pulsonic 5.2 pressure oiler</li> <li>- Pai Lung brand misty oiler</li> </ul>
 Creels	<ul style="list-style-type: none"> <li>- PL-KFCJ is equipped with B8/B9 type combi creels</li> <li>- PL-KFCJ/CS3 is equipped with square open type striper creels</li> </ul>	<ul style="list-style-type: none"> <li>- D8/D9 type PVC or aluminums tube creels</li> <li>- Overhead creels</li> <li>- Fan creels - Filter creels</li> </ul>
 Others	<ul style="list-style-type: none"> <li>- Needle detectors</li> <li>- Lighting on frame &amp; fabrics</li> <li>- Top fans system</li> <li>- Dial height &amp; horizontals level gauges</li> <li>- Min compressed air : 6 bar, 250 l/min</li> </ul>	<ul style="list-style-type: none"> <li>- Uniwave central anti-dust blow system</li> <li>- Memminger top fan system</li> <li>- Integrated LCD control system can be added:</li> <li>• POMS on-line monitoring</li> </ul>
 Conversion kit		<ul style="list-style-type: none"> <li>- PL-KFCJ can be converted to <b>PL-KSCJ Single Knit Electronic Jacquard Circula Knitting Machine, PL-KSE(P)CJ Single Knit Mesh Electronic Jacquard Circula Knitting Machine.</b></li> </ul>